



Yeo Street, London, E3

BUTLER  STAG



Smartly presented one bedroom high-specification apartment conveniently located for the DLR and the Limehouse Cut.



- Smart One Bedroom Apartment
- Concierge and Roof Terrace
- DLR Stations Nearby
- Furnished
- Modern and Secure Development
- Open-Plan Living Space / Kitchen
- Wealth of Local Amenities
- Available from 19th January 2026

Featuring a welcoming living space which is open-plan to a sleek fitted kitchen, the property further comprises of a generously-sized double bedroom with fitted wardrobes, a well-appointed bathroom and a handy hallway storage cupboard.

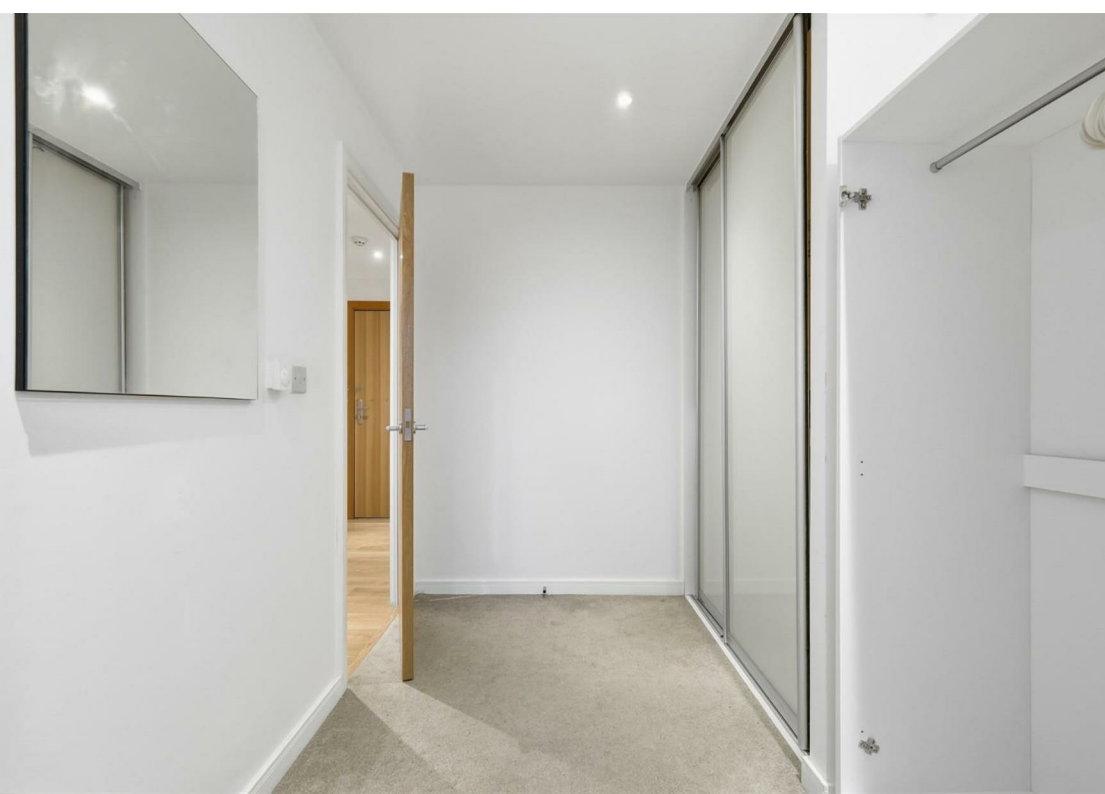
The development is modern, secure and well maintained, where residents benefit from concierge service, a roof terrace with far-reaching city views, communal gardens and bike storage.

The location is well-served by amenities, including a supermarket, coffee shop and gym all just moments from your front door. Positioned between Devons Road and Langdon Park DLR stations, Bromley-by-Bow underground station is slightly further afield but also easily reachable. The Limehouse Cut provides serene waterside walks and runs.

Perfectly suited to a single professional or a couple, this second floor apartment is offered furnished and is available from 19th January 2026.

EPC Rating B
Council Tax Band C





Hudson House

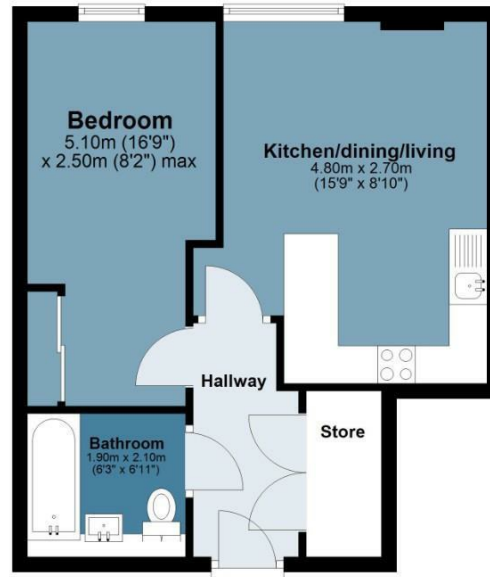
Approx. Gross Internal Area 40.1 Sq M (431.5 Sq Ft)

BUTLER & STAG



Second Floor

Approx. 40.1 sq. metres (431.5 sq. feet)



Measurements are approximate and for illustration purposes only. While we do not doubt the accuracy and completeness, we advise you conduct a careful independent assessment of the property to determine monetary value.
© @modephoto.uk www.modephoto.co.uk

IMPORTANT NOTICE - These particulars have been prepared in good faith and they are not intended to constitute part of an offer or contract. We have not performed a structural survey on this property and the services, appliances and specific fittings have not been tested. All photographs, measurements, floor plans and distances referred to are given as a guide and should not be relied upon.

BUTLER & STAG

☎ 020 8102 1236

🏠 508 Roman Road, Bow, London, E3 5LU

✉ bow@butlerandstag.com

www.butlerandstag.uk